

TOP-HAT PLAN EXEMPTION STATEMENT

Top-Hat Plan Exemption
Employee Benefits Security Administration
Room N-1513
U.S. Department of Labor
200 Constitution Ave., NW
Washington, D.C. 20210

2520190450076

Employer Name: Jefferson County Teachers Credit Union

Address: 1500 W Washington Street, Monticello, FL 32344-1134

Employer EIN: 59-1227031

Name of Plan: Jefferson County Teachers Credit Union 457(b) Plan and Trust

The Plan is maintained for a select group of management or highly compensated employees.

Number of Plans: 1

Number of Employees in Plan(s): 1



01/24/19 14:05

January 25, 2019

Top-Hat Plan Exemption
Employee Benefits Security Administration
Room N-1513
U.S. Department of Labor
200 Constitution Ave., NW
Washington, D.C. 20210

Ref. No.: 009-0776-3/750

Re: Jefferson County Teachers Credit Union 457(b) Plan and Trust

To Whom It May Concern:

Enclosed please find the Top-Hat Plan Exemption Statement for the Specimen Section 451 Deferred Compensation Plan established by Jefferson County Teachers Credit Union.

If you have any questions, please contact me at our corporate office, 800.356.2644, Ext. 665.7452.

Sincerely,

A handwritten signature in black ink that reads "Beth Fuel".

Beth Fuel, QKA
Manager II, Retirement Implementations
CUNA Mutual Retirement Solutions
Beth.Fuel@cunamutual.com

BF/idi

Enclosure

cc: Judy Nazaruk

RU55230

CUNA MUTUAL
RETIREMENT SOLUTIONS™

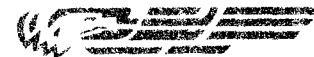
1809 24th Street
Great Bend, KS 67530

**ADDRESS SERVICE
REQUESTED**

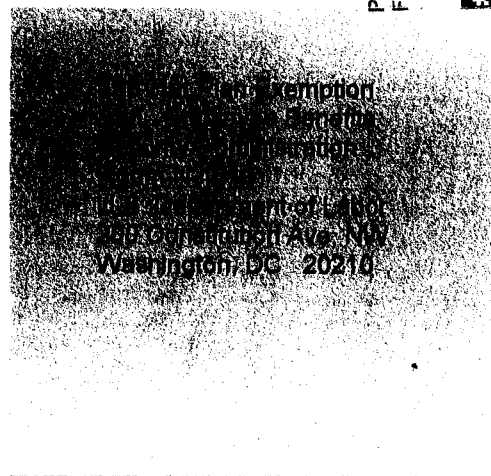
PRESORTED
FIRST CLASS



U.S. POSTAGE PITNEY BOWES



ZIP 53705 \$ 000.37⁸
02 4W
0000354640 JAN 25 2019



Exemption
Benefit
Information
...
200 Constitution Ave. NW
Washington, DC 20210

28 LJIA15B 20210

