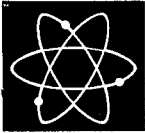


2520130091776



MIDDLETON ELECTRIC, INC.

TOM MIDDLETON, President

Electrical Contractor
Commercial, Industrial
Residential, Data/Fiber Cabling
& Thermal Imaging

August 1, 2013

VIA CERTIFIED MAIL

United States Department of Labor
Employee Benefits Security Administration
Top Hat Plan Exemption
200 Constitution Ave., N.W., Ste N-1513
Washington, D.C. 20210

2013/AUG 28 PM 4: 1

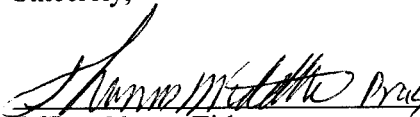
RE: Middleton Electric, Inc. Supplemental Executive Retirement Plan

Dear Sir or Madam:

In accordance with Department of Labor Regulation § 2520.104-23, this letter will service as the alternative method of compliance with the reporting and disclosure requirements of Part I of Title I of the Employee Retirement Income Security Act of 1974, as amended, for a pension plan for a select group of management or highly compensated employees.

1. Middleton Electric, Inc., a Nebraska corporation, (the "Sponsor") maintains and sponsors a nonqualified Supplemental Executive Retirement Plan (the "Plan").
2. The address of the Sponsor is PO Box 447 Grand Island, NE 68802.
3. The employer identification number assigned by the Internal Revenue Service to the Sponsor is 47-0798110.
4. The Sponsor declares it maintains the following plan primarily for the purpose of providing deferred compensation for a select group of management or highly compensated employees.
5. There are 5 employees participating in the Plan.
6. A copy of the plan document will be furnished upon request.

Sincerely,


Officer Name, Title

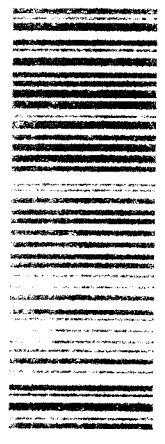
Kearney Office:
2620 E. Hwy. 30
Kearney, NE 68848
Phone (308) 238-0555
Fax (308) 238-5098

Grand Island Office:
2716 W. Old Hwy. 30
P.O. Box 447
Grand Island, NE 68802
Phone (308) 382-2550
Fax (308) 382-3442

Lincoln Office:
2300 Kimarra Place - Ste 6
Lincoln, NE 68521
Phone (402) 467-3000
Fax (402) 467-3001



MIDDLETON ELECTRIC, INC.
 P.O. Box 447
 Grand Island, NE 68802



7009 2410 0001 7653 2246



1900



U.S. POSTAGE
 PAID
 GRAND ISLAND, NE
 68801
 AUG 23, 13
 AMOUNT

\$6.11
 00041517-02

United States Department of Labor
 Employee Benefits Security Administration
 Top Hat Plan Exemption
 200 Constitution Ave., N.W. Ste N-1513
 Washington, DC 20210

RETURN RECEIPT
 REQUESTED

RETURN RECEIPT
 REQUESTED