



2520130090244

CITRUS VALLEY HEALTH PARTNERS

January 3, 2013

EBSA/REGULATIONS
2013 JAN 16 PM 2:24

Top Hat Plan Exemption
Pension and Welfare Benefits Administration
Room N-5644
U.S. Department of Labor
200 Constitution Avenue, N.W.
Washington, D.C. 20210

Corporation hereby supplies the following information pursuant to Department of Labor Regulations Section 2520.104-23:

A. Name and Address of Employer:


Citrus Valley Health Partners
140 W. College St.
Covina, CA 91722

B. Employer Identification Number: 95-3885523

C. Citrus Valley Health Partners maintains the following plan for a select group of management or highly compensated employees:

1. Citrus Valley Health Partners 457(f) Plan
Number of Participants: 11

Very truly yours,
Citrus Valley Health Partners

Signature 

By Lisa Foust

Title Chief Human Resources Officer

140 W. College St. • P.O. Box 6108 • Covina, CA 91722-5108 • (626) 814-2430
www.cvhp.org

*Citrus Valley Medical Center – Inter-Community Campus & Queen of the Valley Campus,
Foothill Presbyterian Hospital and Citrus Valley Hospice*



CITRUS VALLEY HEALTH PARTNERS

December 26, 2012

Top Hat Plan Exemption
Pension and Welfare Benefits Administration
Room N-5644
U.S. Department of Labor
200 Constitution Avenue, N.W.
Washington, D.C. 20210

EDSA/PUBLIC INFORMATION
2013 JAN 16 PM 2:21

Corporation hereby supplies the following information pursuant to Department of Labor Regulations Section 2520.104-23:

A. Name and Address of Employer:

Citrus Valley Health Partners
140 W. College St.
Covina, CA 91722

B. Employer Identification Number: 95-3885523

C. Citrus Valley Health Partners maintains the following plan for a select group of management or highly compensated employees:

1. Citrus Valley Health Partners 457(b) Plan
Number of Participants: 56

Very truly yours,
Citrus Valley Health Partners

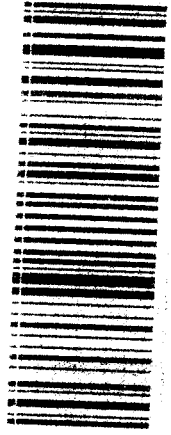
Signature

By Lisa Foust

Title Chief Human Resources Officer

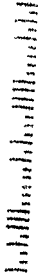
140 W. College St. • P.O. Box 6108 • Covina, CA 91722-5108 • (626) 814-2430
www.cvhp.org

*Citrus Valley Medical Center – Inter-Community Campus & Queen of the Valley Campus,
Foothill Presbyterian Hospital and Citrus Valley Hospice*

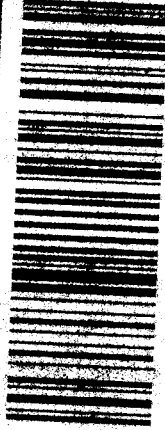


7010 1060 0002 5020 6912

Top Hat Plan Exemption
Pension and Welfare Benefits Administration
Room N-5644
U.S. Department of Labor
200 Constitution Avenue, N.W.
Washington, D.C. 20210

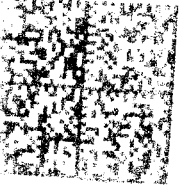
20210 

CERTIFIED MAIL

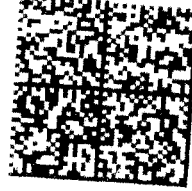


7010 1060 0002 5020 6929


CITRUS VALLEY HEALTH PARTNERS
140 W. College St. • P.O. Box 5105
Corvallis, CA 97331-5105



016H16507670
\$05.750
Mailed From 91790
US POSTAGE



016H16507670
\$05.750
Mailed From 91790
US POSTAGE

Hasler

Top Hat Plan Exemption
Pension and Welfare Benefits Administration
Room N-5644
U.S. Department of Labor
200 Constitution Avenue, N.W.
Washington, D.C. 20210

20210 