

RIVERSTONE



2520122140149

250 COMMERCIAL STREET
SUITE 5000
MANCHESTER, NEW HAMPSHIRE 03101
TELEPHONE: (603) 656-2200
FACSIMILE: (603) 656-2400/2401

EBBA/PUBLIC DISCLOSURE
2012 JUL 26 PM 4:08

July 24, 2012

Employee Benefits Security Administration
U.S. Department of Labor
200 Constitution Avenue NW
Suite N-1513
Washington, DC 20210

Re: **Top Hat Plan Exemption**

Dear Sir or Madam:

RiverStone Resources LLC hereby supplies the following information pursuant to Section 2520.104-23 of the Department of Labor's regulations under Title 29 of the Code of Federal Regulations:

1. Name and address of Employer: RiverStone Resources LLC, 250 Commercial Street, Suite 5000, Manchester, NH 03101.
2. Employer's federal identification number: 02-0511580
3. Employer has adopted the following nonqualified deferred compensation plans for the purpose of providing deferred compensation to a select group of management or highly compensated employees --
 - a. Supplemental Individual Retirement Plan
Number of Participants: 51
 - b. Supplemental Executive Retirement Plan
Number of Participants: 12

Respectfully submitted,

A handwritten signature in black ink that reads "Jim Kelly".

Jim Kelly, Senior Vice President, Human Resources

(603) 950-4328
RIVERSIDE RESOURCES, LLC
250 COMMERCIAL ST. STE 5000
MANCHESTER, NH 03101-1116

SP

SHIP TO:
EMPLOYEE BENEFITS SECURITY ADMIN
U.S. DEPARTMENT OF LABOR
SUITE N-1513
200 CONSTITUTION AVE NW
WASHINGTON DC 20210-0001

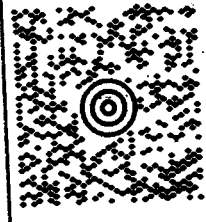
Domestic Shipments

- To qualify for the Letter rate, UPS Express Envelopes may only contain correspondence, urgent documents, and/or electronic media, and must weigh 8 oz. or less. UPS Express Envelopes containing items other than those listed or weighing more than 8 oz. will be billed by weight.

International Shipments

- The UPS Express Envelope may be used only for documents of no commercial value. Certain countries consider electronic media as documents. Visit ups.com/importexport to verify if your shipment is classified as a document.
- To qualify for the Letter rate, the UPS Express Envelope must weigh 8 oz. or less. UPS Express Envelopes weighing more than 8 oz. will be billed by weight.

Note: Express Envelopes are not recommended for shipments of electronic equipment containing sensitive personal information or breakable items. Do not use for cash or cash equivalent.

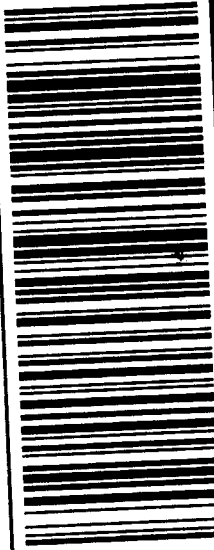


MD 201 9-78



UPS GROUND

TRACKING #: 1Z 321 EW5 03 5290 0299



BILLING: P/P

Client Name: HR
Dept No.: 600

MS 15.0.16

LP2844 27.0R 04/2812



SEE NOTICE ON REVERSE REGARDING UPS TERMS, AND NOTICE OF LIMITATION OF LIABILITY. WHEN ALLOWED BY LAW, SHIPMENTS MAY BE ACT AS FORWARDING AGENT FOR EXPORT COUNTRY AND CUSTOMER PURPOSES. IT EXPORTED FROM THE U.S. AND CANNOT BE RE-IMPORTED INTO THE U.S. WITHOUT PERMISSION FROM THE U.S. DEPARTMENT OF COMMERCE. DIVISION COUNTRY IS NOT APPLICABLE.

100% Recycled fiber
80% Post-Consumer



International Shipping Notice — Carriage hereunder may be subject to the rules relating to liability and other terms and/or conditions established by the Convention for the Unification of Certain Rules Relating to International Contract for the International Carriage of Goods by Road (the "CMR Convention"). These commodities, technology or software were exported from the U.S. in accordance with the Export Administration Regulations. Diversion co