



Society of Diagnostic Medical Sonography
2745 N. Dallas Parkway, Suite 350
Plano, TX 75093-8730
USA

214-473-8057
Fax 214-473-8563
<http://www.sdms.org>

TOP-HAT PLAN EXEMPTION STATEMENT

Top-Hat Plan Exemption
EBSA
Room N-1513
U.S. Department of Labor
200 Constitution Ave., NW
Washington, D.C. 20210

Employer Name: Society of Diagnostic Medical Sonography

Address: 2745 North Dallas Parkway, Suite 350, Plano, TX 75093

Employer EIN: 23-7186150

The Employer maintains a Plan (or Plans) primarily for the purpose of providing deferred compensation for a select group of management or highly compensated employees.

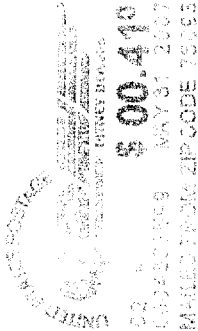
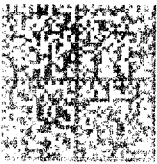
Number of Plans: 1

Number of Employees in Plan(s): 1

07 JUN 11 PM 2:27



Society of Diagnostic Medical Sonography
 2745 Dallas Parkway, Suite 350
 Plano, TX 75093-8729
 USA



Topical Plan Exemption
 EB5A
 Room N-1513
 U.S. Dept. of Labor
 200 Constitution Ave, NW
 Washington DC 20010

2021040000

