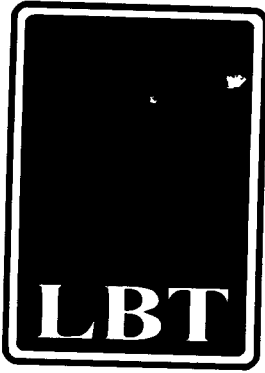


2520060620652



# LONDON BRIDGE TRADING COMPANY, LTD.

3509 Virginia Beach Blvd.  
Virginia Beach, Virginia 23452 • USA  
Telephone (757) 498-0207 – (800) 229-0207  
Fax (757) 498-0059  
www.londonbridgetrading.com

Top Hat Plan Exemption  
Pension and Welfare Benefits Administration  
Room N-5644  
U.S. Department of Labor  
200 Constitution Avenue, NW  
Washington, DC 20210

October 25, 2005

**VIA CERTIFIED MAIL**  
**RETURN RECEIPT REQUESTED**

U.S. DEPT OF LABOR  
OFFICE OF PENSION AND WELFARE ADMINISTRATION  
05 NOV 15 PM 3:11

Re: London Bridge Trading Corporation, LTD.  
Supplemental Plan Participant Retirement Plan

To the Secretary of Labor:

In compliance with the requirements of the alternative method of reporting and disclosure under Part 1 of Title 1 of the Employee Retirement Income Security Act of 1974 for unfunded or insured pension plans for a select group of management or highly compensated employees, specified in Department of Labor Regulations, 29 C.F.R. Section 2520.104-23, the following information is provided by the undersigned employer.

Name and Address of Employer: London Bridge Trading Corporation, LTD.  
3509 Virginia Beach Blvd.  
Virginia Beach, Virginia 23452  
Employer Identification Number: 54-1593767

London Bridge Trading Corporation, LTD. maintains a plan primarily for the purpose of providing deferred compensation for a select group of management or highly compensated employees.

Number of Plans and Participants in Each Plan:

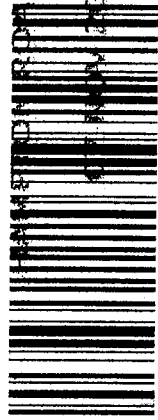
(1) Nonqualified Deferred Compensation Plan that covers (1) employee.

London Bridge Trading Corporation, LTD

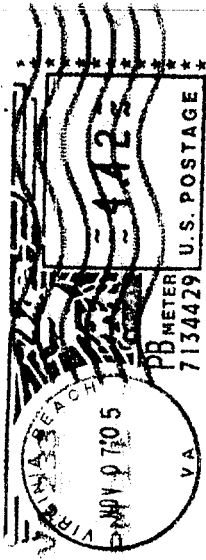
By: H. D. McDougal  
H. Douglas McDougal



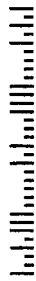
**LONDON BRIDGE TRADING CO. LTD.**  
 3509 Virginia Beach Blvd.  
 Virginia Beach, Virginia 23452



7099 3400 0018 6860 0542



CERTIFIED MAIL  
 RETURN RECEIPT REQUESTED



Top Hat Plan Exemption  
 Pension and Welfare Benefits Administration  
 Room N-5644  
 U.S. Department of Labor  
 200 Constitution Avenue NW  
 Washington DC 20210

