



December 30, 1997

DOL-PWBA
PUBLIC OPINION
98 JAN -7 AM 9:31

2520005096840

Top Hat Plan Exemption
Pension and Welfare Benefits Administration
Room N-5638
U.S. Department of Labor
200 Constitution Avenue N.W.
Washington, DC 20210

Dear Sir or Madam:


In accordance with Labor Regulation 2520.104-23, we are submitting the following information for a Top Hat Plan Exemption:

Employer: Telecare Corporation
Address: 1100 Marina Village Parkway, Suite 100
Alameda, California 94501-1043
Employer's EIN: 94-1735271

The above named employer maintains a plan primarily for the purpose of providing deferred compensation for a select group of management or highly compensated employees.

Number of Plans: 1
Employees Covered by the Plan: 19

Sincerely,


Marshall Langfeld
Vice President/Chief Financial Officer

MDL:js

cc: Scott Taylor

TELECARE CORPORATION
1100 MARINA VILLAGE PARKWAY, SUITE 100
ALAMEDA, CA 94501-1043

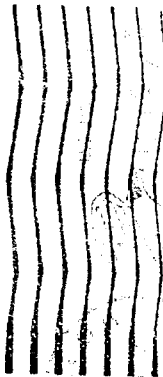
(510) 337-7950
(510) 337-7969 FAX



TELECARE CORPORATION

Telecare Corporation

1100 MARINA VILLAGE PARKWAY, SUITE 100
ALAMEDA, CA 94501-1043



Top Hat Plan Exemption
Pension and Welfare Benefits Administration
Room N-5638
U.S. Department of Labor
200 Constitution Avenue N.W.
Washington, D.C. 20210

